

# Waterstudio unveils the world's first floating timber tower

11/14/2019 under [Architecture](#), [Floating Houses](#) 0

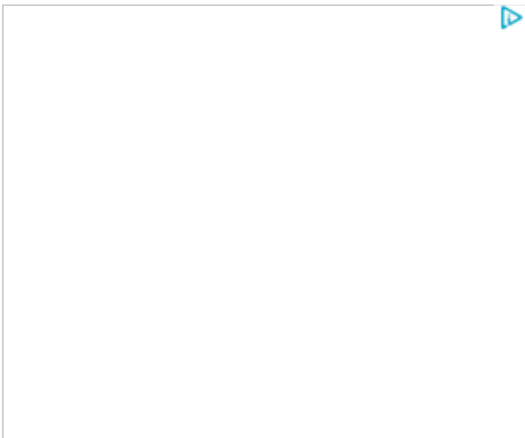
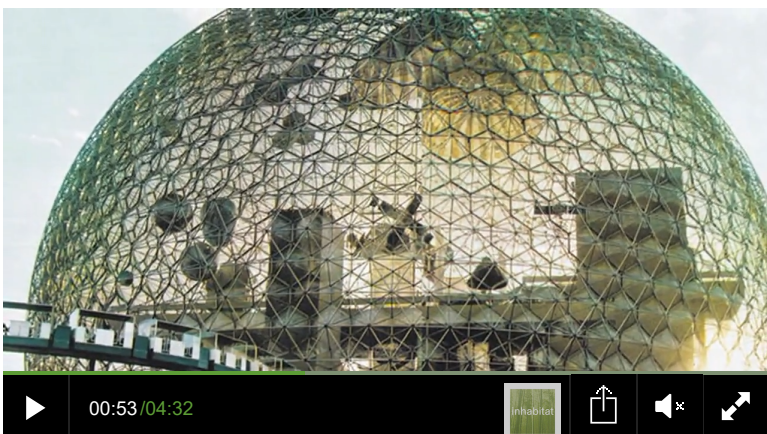
Like 30 [Flip](#)



by Nicole Jewell

## VIEW SLIDESHOW

Amsterdam-based design firm **Waterstudio** is already well-known for its incredible floating architecture, but it continues to break ground in the world of innovative design. Now, the firm, which is led by Koen Olthuis, has unveiled the world's first floating timber tower. Slated for the waters of Rotterdam, the tower is made out of **CLT** and will house office space, a public green park and a restaurant with a terrace.



## RELATED ARTICLES

[Gallery, Architecture](#)  
Soaring wooden tower hovers over 17th century fortress

[News, Green Building, Architecture](#)  
Spectacular Wood Tower That Can be Built with Single Nail Wins 2019

[Water Issues, Gallery, Floating Houses](#)  
Snowflake-Shape Krystall Hotel to Sit on Coast of Norway

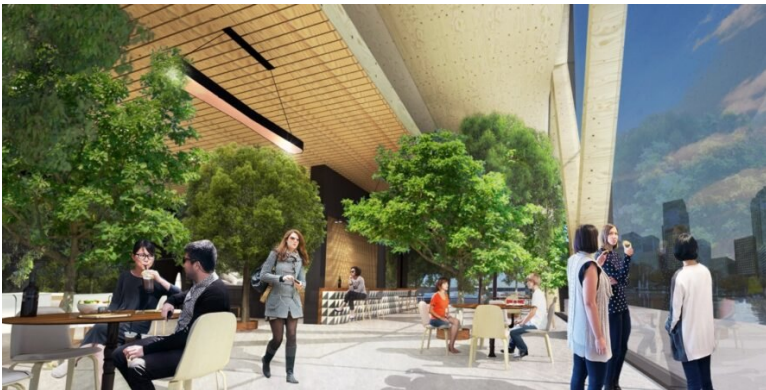
[Water Issues, Urban design, Special Features](#)  
INHABITAT INTERVIEW: Architect Koen Olthuis to Embrace Rising Sea Levels

[Interviews, Innovation, Green Technology](#)  
Inhabitat's Top 9 Most Innovative Green Buildings of 2014



Waterstudio's most recent project is a contemporary take on floating architecture. The 130-foot-tall tower will be made out of cross-laminated timber, making the structure much lighter than concrete builds. Additionally, working with CLT means the building will be made with a **renewable resource**, providing the city of Rotterdam with a cutting-edge sustainable landmark. The tower will also make use of large expanses of glass to let plenty of natural light into the interior. Abundant vegetation, including pocket gardens planted with vegetables, will be found throughout the tower — inside and out.

**Related: Waterstudio.nl's Sea Tree is a protected floating habitat for flora and fauna**



According to Olthuis, the building's design is akin to a sheet of paper that has been pushed together until a tower forms in the middle. The base of the tower is located on a flat platform, which will be covered in vegetation. Rising up from the deck, the tower's facade is marked by a series of V-shaped columns. Inside, a spacious atrium will be flooded with **natural light**.



Although the tower will be mainly used as **office space**, there are several areas slated for the public. With offices located on the upper floors, the lower floors and main deck will house several publicly accessible spaces, such as a gallery and a coffee bar. Also on the lower deck, a restaurant will feature a beautiful terrace that provides stunning views of the harbor. For additional space, a lush, green courtyard will let workers and visitors enjoy fresh air day or night. This area is designed to be a **flexible space** for various functions and events happening year-round.

### + Waterstudio

*Images via Waterstudio*