

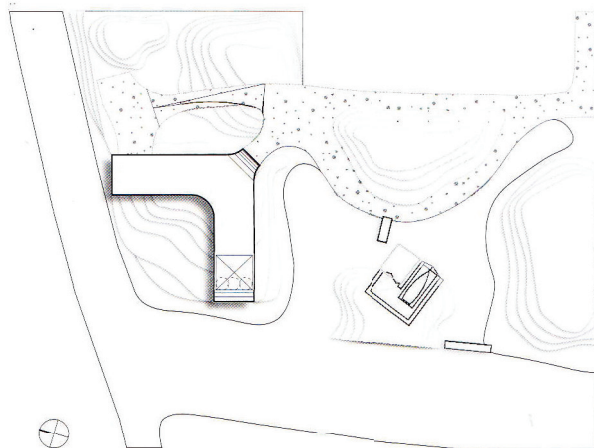
新水岸别墅

Villa New Water

建筑师: Koen Olthuis – Waterstudio.NL

地点: Westland, the Netherlands

摄影师: Architect Koen Olthuis



总平面图
比例 1:1500
Site plan
scale 1:1500

当建筑师Koen Olthuis第一次来到水岸别墅的场地时,便决定在此设计一座既能与周围环境所带来的体验相得益彰,同时还能够突出这种体验的别墅。为了保留当地的乡村特色,新水岸别墅具有严格的设计规范,即对一层以上的体量建造有所限制。然而在这些限制条件的限制下,建筑师最终构思了一个具有多样化空间的精妙设计。

Koen Olthuis决定为别墅建造一层地下室,以在外围护结构围合的有限空间内创造更大的建筑面积。而如何使阳光射入

地下层便成为这座别墅的设计亮点。

建筑体量表现为一个白色框架结构,框架勾勒出大型玻璃表面的轮廓,此外,玻璃使整座别墅变得透明。木材在整座建筑中随处可见,其触感为整体结构增添了一分精致性和暖意。白色的框架沿着立面弯曲延伸,并且在建筑的两端闭合,为人们提供了望向户外的不同视野。位于建筑中心的框架结构向上凸起,成为入口的标志。别墅入口被设计成一处向上迎着朝阳的空间。立面交替使用可丽耐材料和玻璃,类似于可丽耐的无缝材料有助于实现

建筑师所期望的无缝造型,玻璃则使立面变得透明。

这座别墅的主要设计理念是通透性。建筑师设计了一个开放式的布局(几乎没有安装门),因此整座别墅的内部都具有通透性。人们从主入口进入,来到一间开放的门厅,之后被引导沿着别墅内的曲形墙面向左或向右行走。一层设有一间起居室、厨房和餐厅,厨房位于一层的中心位置,因此自然而然地成为室内的点睛设计。此外,一层长长的玻璃墙体还使室外与室内融为一体,为别墅带来通透感。





both ends of the house framing different views of the outside. In the centre, the frame rises to mark the entrance. The entrance is designed to be a space to take in the morning sun. The facade alternates between materials like Corian and glass. A flawless material like Corian helps in realizing "seamless building form" as envisioned by the architect while glass helps by imparting transparency to the facade.

For the building, the guiding concept for design was transparency. Transparency was maintained throughout the house by creating an open layout where almost no doors were used. From the main entrance, one steps into an open hallway and is guided to the left or right by the round edges of the house. The ground floor contains a living room, a kitchen and a dining room. The kitchen, located at the centre of plan on the ground floor, is surely the eye-catching design of the house. The long glass walls on the ground floor merges the outside and inside imparting a

transparent feeling to the building. The underground level contains the private functions for the family like a master bedroom, kids bedrooms, the wellness area and the lounge. The master bedroom with an open floor plan connects to a hidden inner garden at one end of the building. The inner garden with gravel and bamboo trees can be experienced across the wellness area from the bedroom. The lounge is situated at the centre of the underground level and becomes part of the circulation area.

The furniture in the house was also designed by Koen Olthuis. Using round corners and soft materials, the furniture is in contrast to the hard Corian used elsewhere. A good example of this is the cupboard with a fireplace that divides the living area and the kitchen. In this way, the concepts of transparency and seamless flow have been translated across the different scales of landscape, architecture and interior design. The architect also designed its interior and

garden. This brings together the different aspects of the design to harmonize with each other. At the site of the villa, one is welcomed by a few hills. These hills help in scripting the perfect approach for the house. As one approaches the hill, the house which is tucked away behind the hills, slowly comes into full view. The hill also serves as a natural route for the cars arriving at the house. On the other side of the water, a boathouse and a bar take shelter underneath the hill. A good view of the house can be enjoyed from the bar. By keeping the garden green and simple, and bringing the outside water into it, the garden seamlessly blends with its surroundings. This seamless blend makes the entire area appear like one large garden from the house. To blend the green further with the house, an artificial strip of grass was used at the edge of the house. This would merge with the garden to give an appearance of the house floating over a green garden.



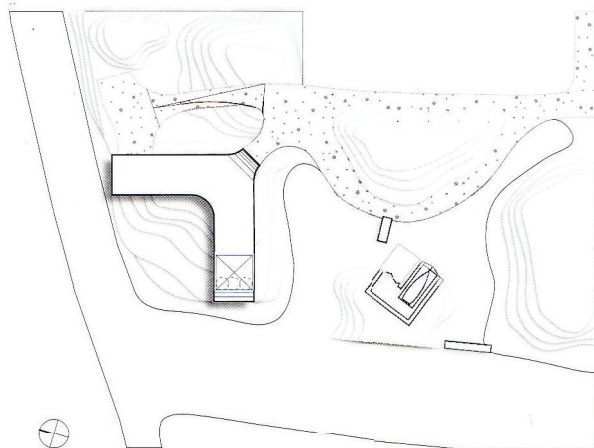
新水岸别墅

Villa New Water

建筑师: Koen Olthuis – Waterstudio.NL

地点: Westland, the Netherlands

摄影师: Architect Koen Olthuis



总平面图
比例 1:1500
Site plan
scale 1:1500

当建筑师Koen Olthuis第一次来到水岸别墅的场地时,便决定在此设计一座既能与周围环境所带来的体验相得益彰,同时还能够突出这种体验的别墅。为了保留当地的乡村特色,新水岸别墅具有严格的设计规范,即对一层以上的体量建造有所限制。然而在这些限制条件的限制下,建筑师最终构思了一个具有多样化空间的精妙设计。

Koen Olthuis决定为别墅建造一层地下室,以在外围护结构围合的有限空间内创造更大的建筑面积。而如何使阳光射入

地下室便成为这座别墅的设计亮点。

建筑体量表现为一个白色框架结构,框架勾勒出大型玻璃表面的轮廓,此外,玻璃使整座别墅变得透明。木材在整座建筑中随处可见,其触感为整体结构增添了一分精致性和暖意。白色的框架沿着立面弯曲延伸,并且在建筑的两端闭合,为人们提供了望向户外的不同视野。位于建筑中心的框架结构向上凸起,成为入口的标志。别墅入口被设计成一处向上迎着朝阳的空间。立面交替使用可丽耐材料和玻璃,类似于可丽耐的无缝材料有助于实现

建筑师所期望的无缝造型,玻璃则使立面变得透明。

这座别墅的主要设计理念是通透性。建筑师设计了一个开放式的布局(几乎没有安装门),因此整座别墅的内部都具有通透性。人们从主入口进入,来到一间开放的门厅,之后被引导沿着别墅内的曲形墙面向左或向右行走。一层设有一间起居室、厨房和餐厅,厨房位于一层的中心位置,因此自然而然地成为室内的点睛设计。此外,一层长长的玻璃墙体还使室外与室内融为一体,为别墅带来通透感。

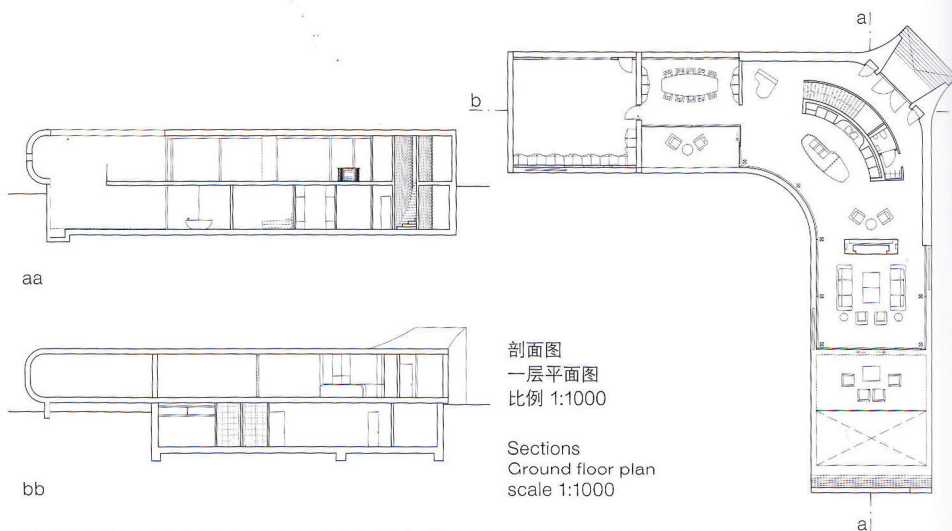




地下层包含了家庭成员的私人空间，如主卧室、儿童卧室、健身区和休息室。开放的主卧室与建筑一端隐蔽的内花园相连接。花园内铺设了砾石地面，并且种有竹子，人们从卧室经过健身区可途经这里。休息室位于地下层的中心，并与流线区融为一体。

室内的家具也是由Koen Olthuis设计的，家具的圆角设计和柔软的材料与其他地方使用的坚硬的可丽耐材料形成对比，带有将起居区域和厨房分隔开来的壁炉的橱柜便很好地展示了这一特色。通过这些设计，通透性和无缝流动这两个理念在不同规模的景观、建筑和室内设计中都得到了诠释。

建筑师还对室内和花园进行了设计，种种措施使设计的方方面面和谐共融。当人们来到别墅场地时，首先看到的是几



座展现欢迎姿态的山丘，这些山丘有助于人们规划通往别墅的完美路径。而当人们走近山丘时，隐匿在山丘之后的别墅便会缓慢地呈现出全貌。山丘同时还是一条车辆抵达别墅的天然小道。而在河水的另一侧，一间船屋和酒吧位于山脚下，受到了山丘的庇护。此外，人们在酒吧还能欣赏到别墅的优美景色。

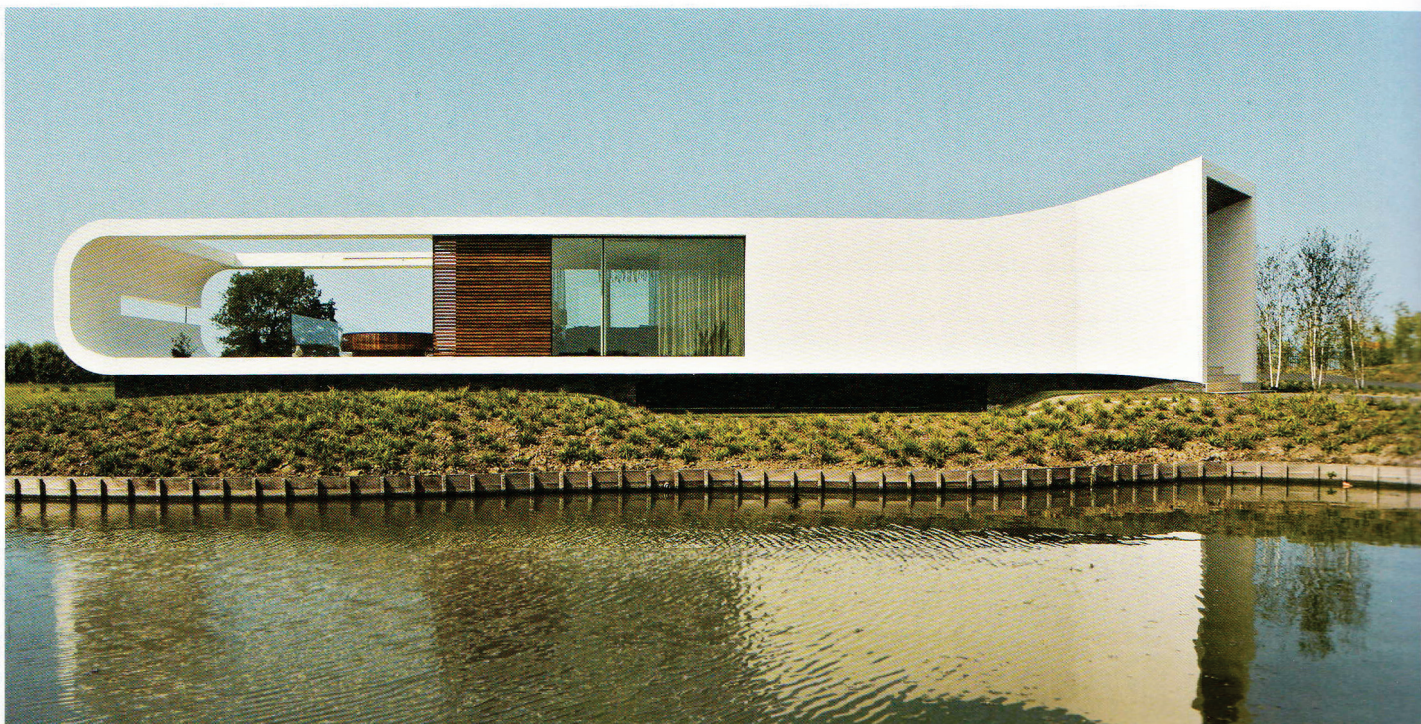
别墅花园的设计风格十分简朴，且四季常青。此外，建筑师将河水引入花园内，使花园完美地融入了周围的环境。这种无缝的融合使整个区域看起来像是一座从住宅中延伸出来的大型花园。为了使绿色植物进一步地与别墅结合起来，这座别墅的边缘铺设了一条人工绿化带，绿化带与花园融为一体，使别墅看上去就好像浮于绿色花园之上。

孙茜 译

From the very first moment of seeing the location for this villa, Koen Olthuis, the architect set out to design a villa that would complement and enhance the experience of its surroundings. In order to maintain the rural character of the location, in the project the New Water Villa, the assignment came with strict regulations which limited the volume allowed above the ground level. These limitations eventually proved to give rise to a rather sophisticated design filled with spatial solutions.

The architect decided to make a floor under the ground level, providing extra surface within the limited dimensions of the building envelope. Solutions for allowing daylight into the lower floor turned out to be major architectural highlights.

The volume was taken up as a white frame outlining large surfaces of glass making the whole villa rather transparent. Touches of wood here and there add subtlety and warmth to the overall scheme. The white frame, curling along the facade, closes off





both ends of the house framing different views of the outside. In the centre, the frame rises to mark the entrance. The entrance is designed to be a space to take in the morning sun. The facade alternates between materials like Corian and glass. A flawless material like Corian helps in realizing "seamless building form" as envisioned by the architect while glass helps by imparting transparency to the facade. For the building, the guiding concept for design was transparency. Transparency was maintained throughout the house by creating an open layout where almost no doors were used. From the main entrance, one steps into an open hallway and is guided to the left or right by the round edges of the house. The ground floor contains a living room, a kitchen and a dining room. The kitchen, located at the centre of plan on the ground floor, is surely the eye-catching design of the house. The long glass walls on the ground floor merges the outside and inside imparting a

transparent feeling to the building. The underground level contains the private functions for the family like a master bedroom, kids bedrooms, the wellness area and the lounge. The master bedroom with an open floor plan connects to a hidden inner garden at one end of the building. The inner garden with gravel and bamboo trees can be experienced across the wellness area from the bedroom. The lounge is situated at the centre of the underground level and becomes part of the circulation area. The furniture in the house was also designed by Koen Olthuis. Using round corners and soft materials, the furniture is in contrast to the hard Corian used elsewhere. A good example of this is the cupboard with a fireplace that divides the living area and the kitchen. In this way, the concepts of transparency and seamless flow have been translated across the different scales of landscape, architecture and interior design. The architect also designed its interior and

garden. This brings together the different aspects of the design to harmonize with each other. At the site of the villa, one is welcomed by a few hills. These hills help in scripting the perfect approach for the house. As one approaches the hill, the house which is tucked away behind the hills, slowly comes into full view. The hill also serves as a natural route for the cars arriving at the house. On the other side of the water, a boathouse and a bar take shelter underneath the hill. A good view of the house can be enjoyed from the bar. By keeping the garden green and simple, and bringing the outside water into it, the garden seamlessly blends with its surroundings. This seamless blend makes the entire area appear like one large garden from the house. To blend the green further with the house, an artificial strip of grass was used at the edge of the house. This would merge with the garden to give an appearance of the house floating over a green garden.

