

A Revolution
in Ceramic



LAUFEN

explore >>

([https://grinx.designboom.com/www/delivery/ck.php?](https://grinx.designboom.com/www/delivery/ck.php?oaparams=2__bannerid=159__zoneid=1__cb=aea0d5a3cc__oadest=http%3A%2F%2Fwww.laufen.com%2Fwps%2Fwcm%2Fconnect%2Flaufen_com%2Fand-benefits%2Fsanitary-ware%2Fsaphirkeramik%3Futm_source%3Ddesignboom%26utm_medium%3Dbanner%26utm_campaign%3Dsaphirkeramik)

[oaparams=2__bannerid=159__zoneid=1__cb=aea0d5a3cc__oadest=http%3A%2F%2Fwww.laufen.com%2Fwps%2Fwcm%2Fconnect%2Flaufen_com%2Fand-benefits%2Fsanitary-ware%2Fsaphirkeramik%3Futm_source%3Ddesignboom%26utm_medium%3Dbanner%26utm_campaign%3Dsaphirkeramik](https://grinx.designboom.com/www/delivery/ck.php?oaparams=2__bannerid=159__zoneid=1__cb=aea0d5a3cc__oadest=http%3A%2F%2Fwww.laufen.com%2Fwps%2Fwcm%2Fconnect%2Flaufen_com%2Fand-benefits%2Fsanitary-ware%2Fsaphirkeramik%3Futm_source%3Ddesignboom%26utm_medium%3Dbanner%26utm_campaign%3Dsaphirkeramik))



waterstudio aligns low-profile dwelling with the dutch landscape

242



148



493



62



waterstudio aligns low-profile dwelling with the dutch landscape

all images courtesy of koen olthuis / waterstudio.nl

this residential property in the netherlands has been designed to comply with strict regulations that limit the height of the single storey structure. completed by koen olthuis of dutch architecture practice waterstudio.nl (<http://waterstudio.nl/>), the property utilizes additional floor space at a subterranean level, providing extra surface within the limited dimensions of the building envelope.



the building is formed of a white frame that outlines large surfaces of glass

the building is formed of a white frame that outlines large surfaces of glass, offset with integrated touches of warm timber. the entrance has been designed to be a space for the dwelling's occupants to take in the morning sun, while façades alternate between corian and glass.



the dwelling integrates touches of warm timber

continuing the sense of transparency that pervades the scheme, a minimal amount of doors are used inside the home. the ground floor contains a living room, kitchen and a dining room, while bedrooms and private programs are positioned below grade. koen olthuis was also responsible for the project's interiors and landscaping, where a simple garden introduces a flow of water inside the plot.



the entrance has been designed to be a space to take in the morning sun



the property utilizes additional floor space at a subterranean storey



the house frames views of the surrounding landscape



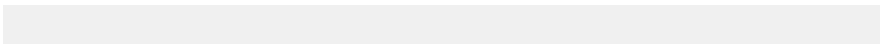
the ground floor contains a living room, kitchen and a dining room

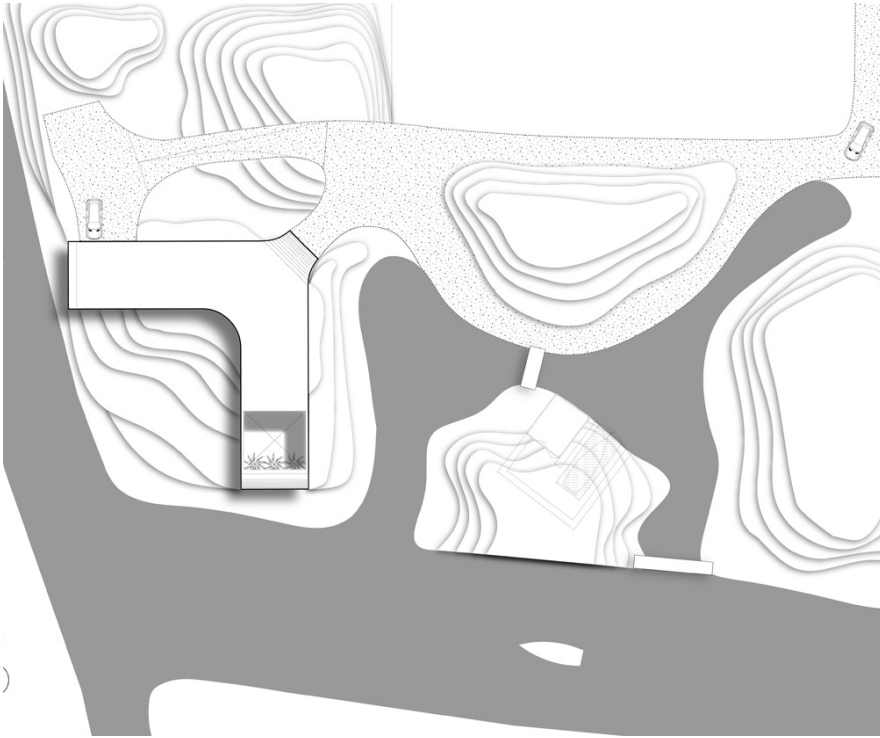


the home's bathroom at lower level

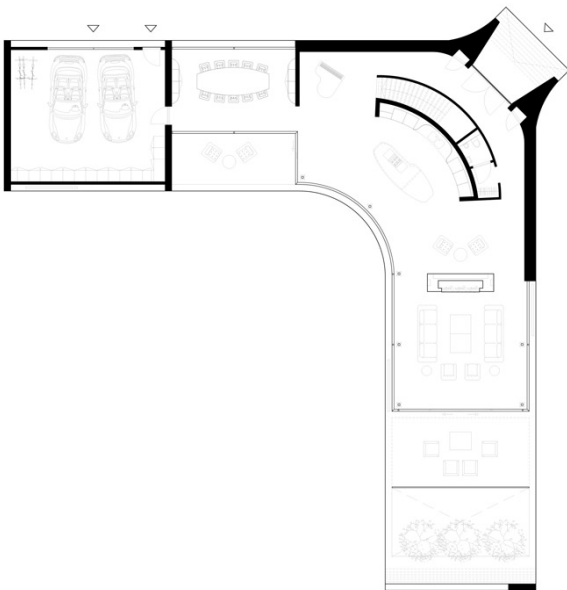


a terrace at the rear of the residence

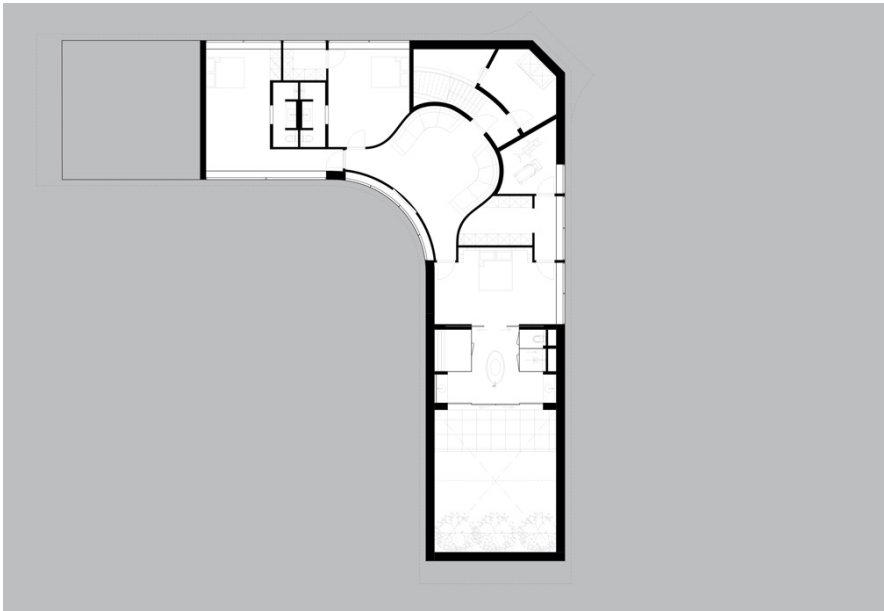




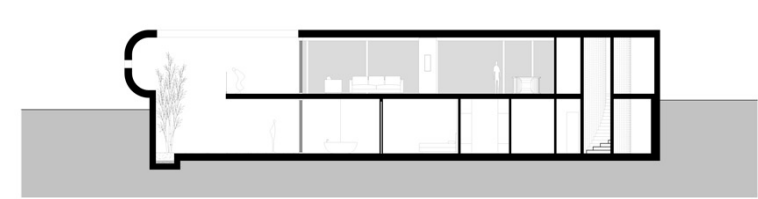
site plan



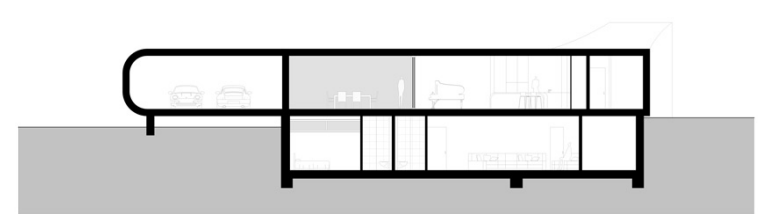
floor plan / level 0



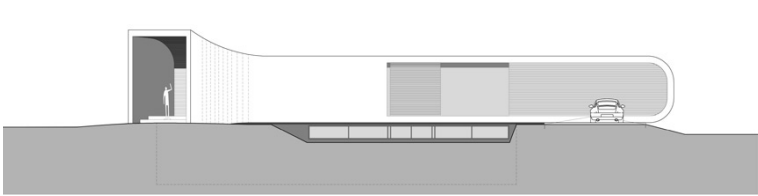
floor plan / level -1



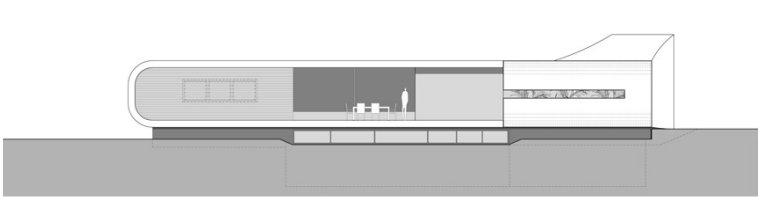
section



section



elevation



elevation

project info:

name: villa new water

location: westland, the netherlands

completed: 2014

photography: architect koen olthuis / waterstudio.nl

architect: koen olthuis / waterstudio.nl

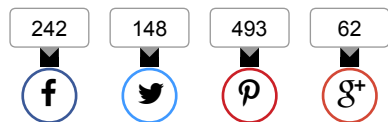
client: van der arend family

contractor: van leent bouwbedrijf

lighting: stout lighting

cladding: corian dupont

philip stevens | designboom



fantastic entryway, curves and fantastic view.



John

so 90's....



Pedro Rogado

have something to add? share your thoughts in our comments section below.

name (required)

e-mail (will not be published) (required)

text

[comments policy](#)

LOG IN



submit

mar 12, 2015

(<https://www.designboom.com/koen-olthuis-villa-new-water-netherlands-03-mar-16-2015/#comment-812036>)

koen-olthuis-villa-new-water-netherlands-03-mar-16-2015/#comment-812036)

mar 16, 2015

(<https://www.designboom.com/koen-olthuis-villa-new-water-netherlands-03-mar-16-2015/#comment-812036>)

koen-olthuis-villa-new-water-netherlands-03-mar-16-2015/#comment-812036)

2015/#comment-812036)

netherlands-03-mar-16-2015/#comment-812036)

08-

2015/#comment-814106)